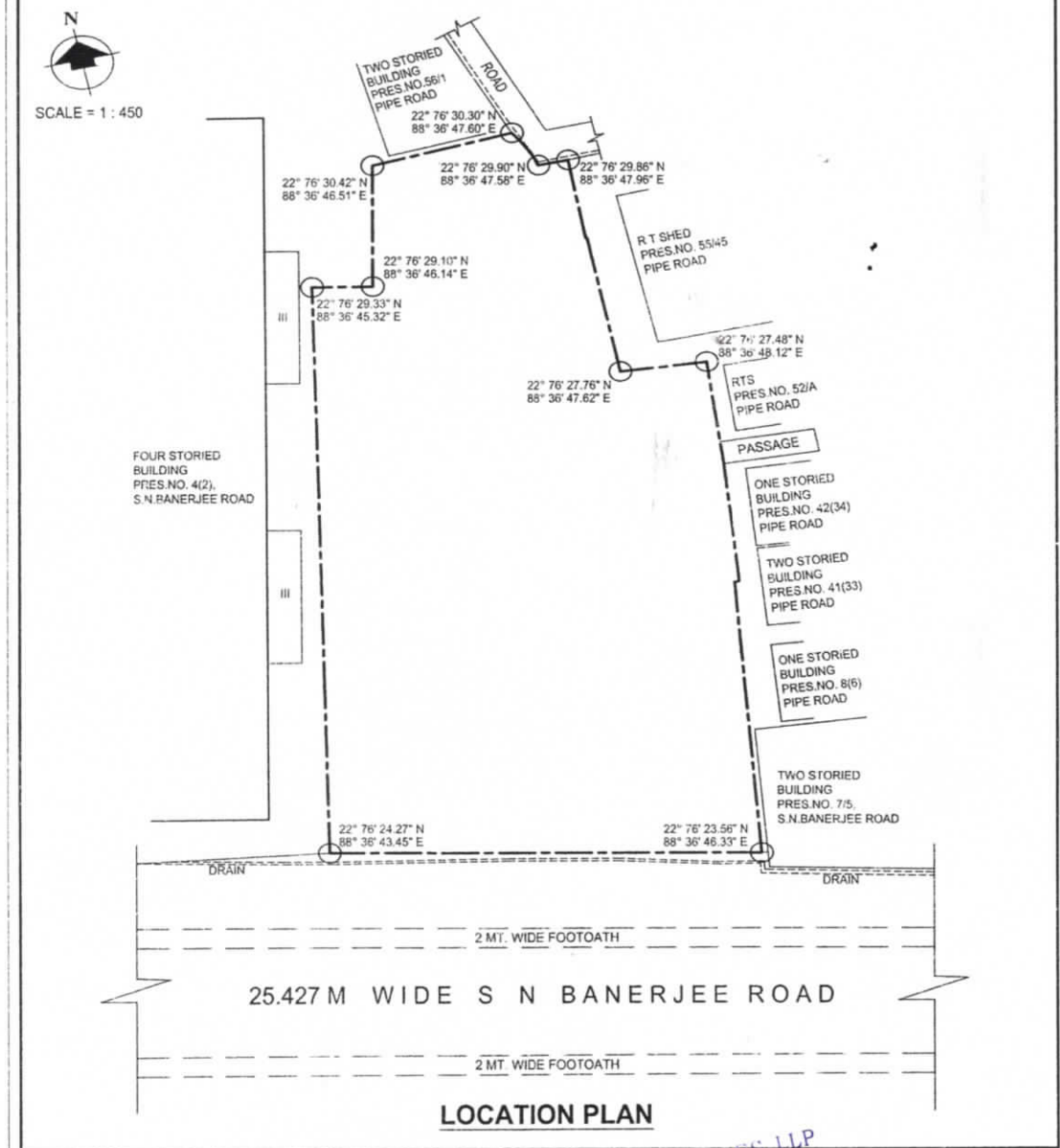




GROUND 2 SKYE

## GROUND 2 SKYE VENTURES LLP

LOCATION DETAILS OF BOUNDARIES INCLUDING LATITUDE & LONGITUDE OF THE LAND DEDICATED FOR THE B+G+VII STORIED RESIDENTIAL CUM COMMERCIAL BUILDING ON R.S. DAG NO.-140,141,142,143, KHATIAN NO.- 242, 508, 621, 622, MOUZA - CHANAK, J.L. NO.- 4, MUNICIPAL HOLDING NO.- 6(4), S.N. BANERJEE ROAD, WARD NO.- 21, UNDER BARRACKPORE MUNICIPALITY, P.S. :- TITAGARH, DIST. :- NORTH 24 PARGANAS.



GROUND 2 SKYE VENTURES LLP

*Siparjan Bha Hochojei*  
DESIGNATED PARTNER